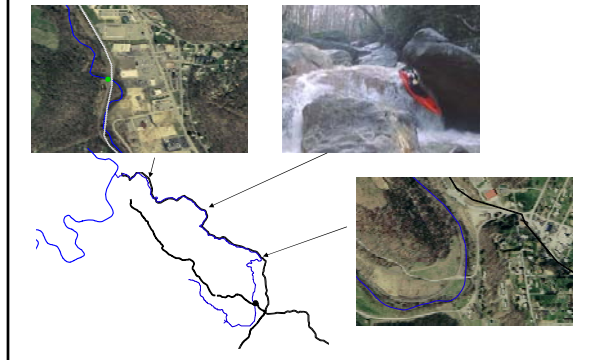
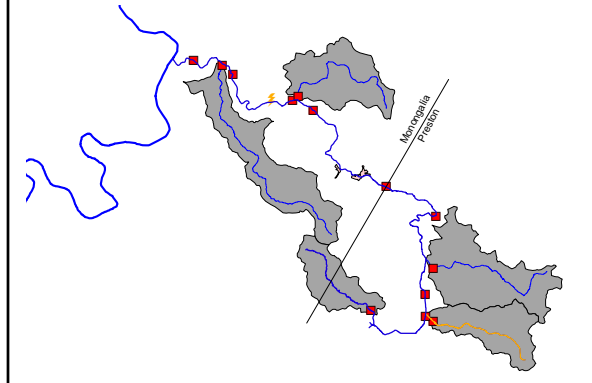


Places with human interaction



Final choice of sites



Compromises

- Two small tribs come in between the “Above Richard” and “Below Richard” sites.
- Large area between Kingwood Pike and Masontown where quite a bit happens
- Long walk to the “Above Kaness” site
- Sacrificed Marilla Park site (visible) for better structure for fish

Ways to look at data: stream profiles

